



BODY DRESS-UP RELATED PARTS

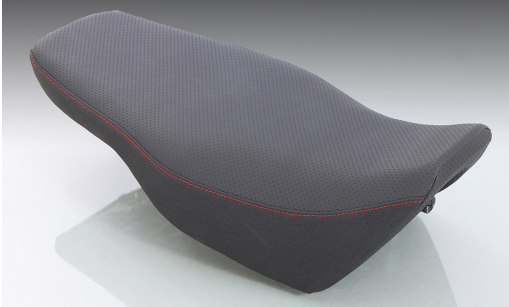
GROM (Late JC61/JC75)

Reduces rider worries even when riding for a long time!
Elaborate Made-In-Japan seat
through pursuit of the ideal seat!

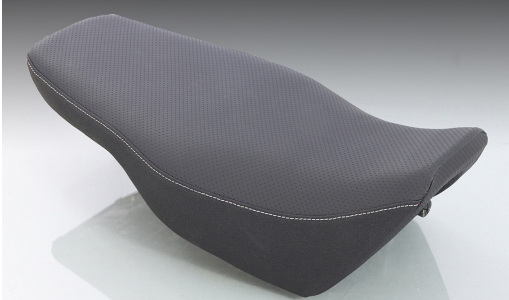
KITACO ORIGINAL "IDEAL SEAT"

GROM (Late JC61/JC75) newly released!!

RED STITCH Ver.





WHITE STITCH Ver.



Special gel with excellent shock absorption and vibration damping properties disperses body pressure in all directions.



| IDEAL SEAT | | |
|--|---|---------|
| STITCH | CODE | PRICE |
| RED | 610-1444020  | ¥37,400 |
| WHITE | 610-1444080  | |
| ● FLAT SEAT TYPE ● STITCH : RED / WHITE ● USES INTEGRALLY MOLDED URETHAN SPONGE + SPECIAL GEL | | |
| APPLICATION | GROM (FNo.JC61-1300001~ /JC75) | |

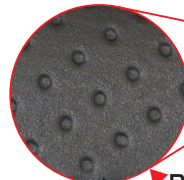
* Passenger belt is not included. Stock belt reusable

POINT 1 A SEAT WITH A GRIP SUITABLE FOR RIDING !!

The seat is made of standard dimple mesh fabric, the sides are not too slippery, and a non-slip skin that provides an appropriate grip.

SEAT SURFACE

NON-SLIP SURFACE

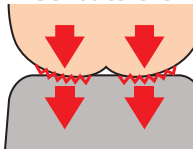


DIMPLE MESH

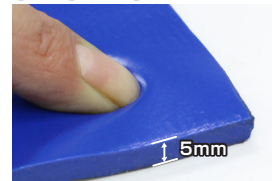
POINT 2 SPECIAL GEL WITH EXCELLENT SHOCK ABSORPTION AND VIBRATION DAMPING!

A special gel with excellent shock absorption and vibration damping properties disperses body pressure in all directions, preventing the load from concentrating on a part of the seat, and is discerning seat that does not get tired even during long-distance touring.

Distribute the load



SPECIAL GEL



POINT 3 THE DIFFERENCE BETWEEN IDEAL SEAT AND STOCK SEAT

Due to the flat shape of the ideal seat, the space (●●●●) for moving backward when riding is wider than that of the stock seat. With the stock seat shape, the backward movement space (●●●●) is narrow and the riding position is restricted.



STOCK SEAT



IDEAL SEAT

SPECIAL GEL IS ADAPTED