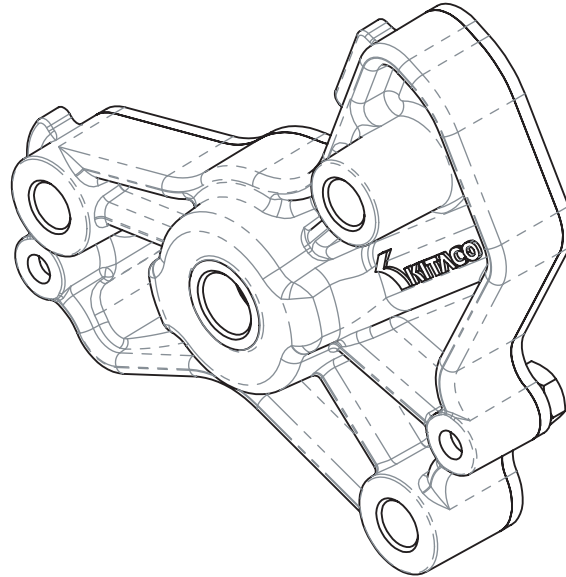


INSTALLATION MANUAL

SUPER OIL PUMP

331-1432000



Application GROM(JC61)

- Thank you for purchasing Kitaco product. Read and understand the instruction before installing.
- There are special tools required to install this kit.
- Use this instruction for setting manual afterwards.
- ※ Keep this instruction since it is not included in repair parts.

ATTENTIONS (MUST READ)

- Race use only. Note that racing parts are not covered under warranty.
- We are not responsible for damages and accidents caused by assembling mistake and improper setting.
- If running without the right setting, you cannot improve and may cause seizure and damage. Make sure to make the right setting for each engine.
- Follow the instructions and install correctly. Do not modify the way which is not listed, or it will cause damage and trouble.
- Ask a mechanic or a specialist at a specialty shop for assembling and setting if you do not understand the role of the surrounding parts.
- Bolts and nuts may get loosen by engine vibration. Make sure to check that each part of bolts and nuts are not loose before running.
- Clean each parts by parts cleaner and use air duster to check whether the oil line is choked up.
- Oil the parts with engine oil when assembling.
- Do not check the sparking of spark plug outside of the cylinder head. There are dangerousness of explosion.
- Refer to the HONDA service manual for each vehicle when installing.



This sheet is for the person who has basic knowledge for maintenance.
Do not operate if you do not have skill and knowledge.



FLAMMABLES
Flammable high gasoline is used during operation. The use of products causing fire or smoke is strictly prohibited.



HIGH VOLTAGE
Wear insulated gloves when checking the sparking outside the cylinder.




TOXIC
Toxic, highly-volatile gasoline is used during operating. Make sure to ventilate the room and do not operate for hours in a hermetically closed room.

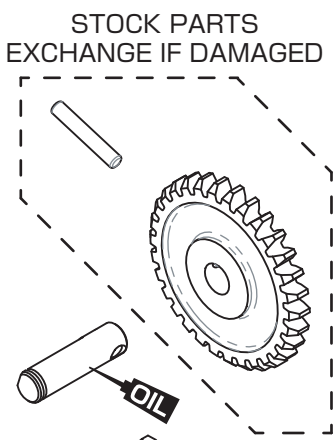


EXTREMELY HOT
Do not touch the engine parts (cylinder, crankcase, muffler, engine oil, etc...) right after engine operation. Make sure to start the installation after the engine parts are completely cool.

INSTALLATION PROGRESS

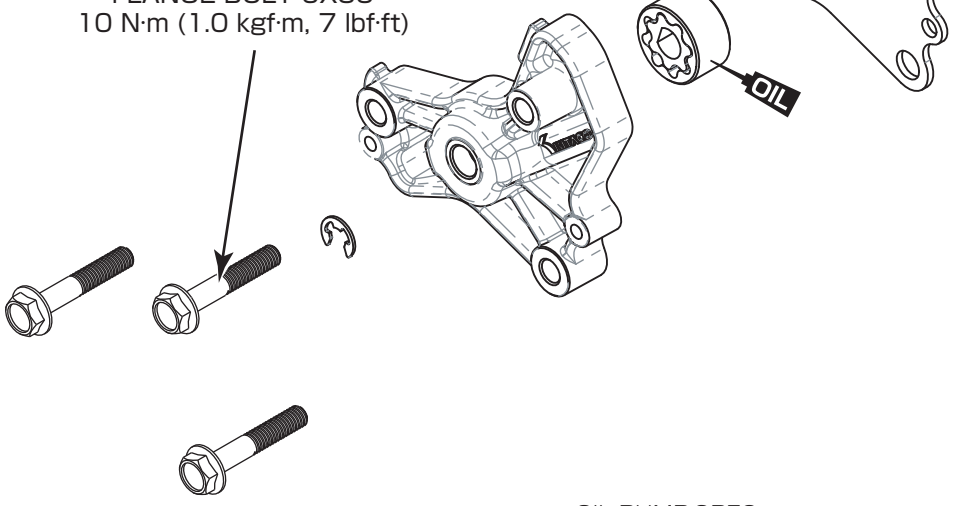
By increasing 40% of thickness (STOCK : 8.8mm), oil increases incredibly. Using big bore kit & oil cooler, cooling performance is expected to increase.

 Follow the instruction and be careful as failure of lubrication system causes severe damages to motor.
Clean / exchange strainer screen / oil filter.

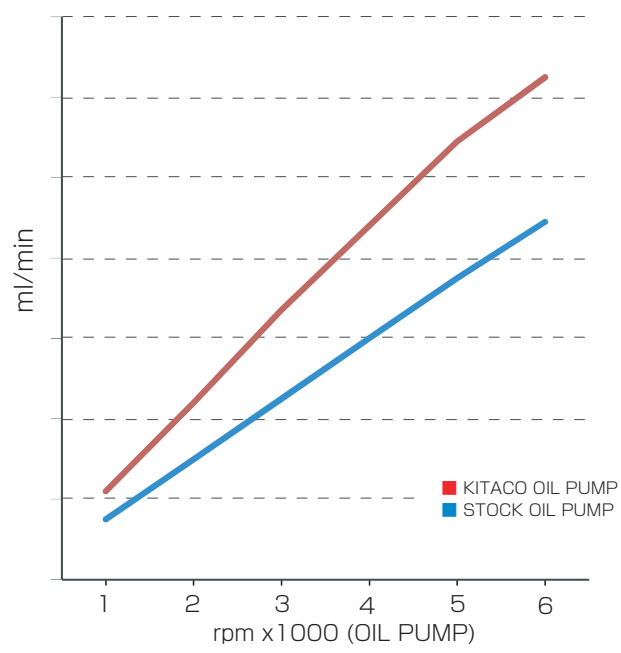


FLANGE BOLT 6X35
5.2 N·m (0.5 kgf·m, 3.8 lbf·ft)

FLANGE BOLT 6X35
10 N·m (1.0 kgf·m, 7 lbf·ft)



OIL PUMP SPEC

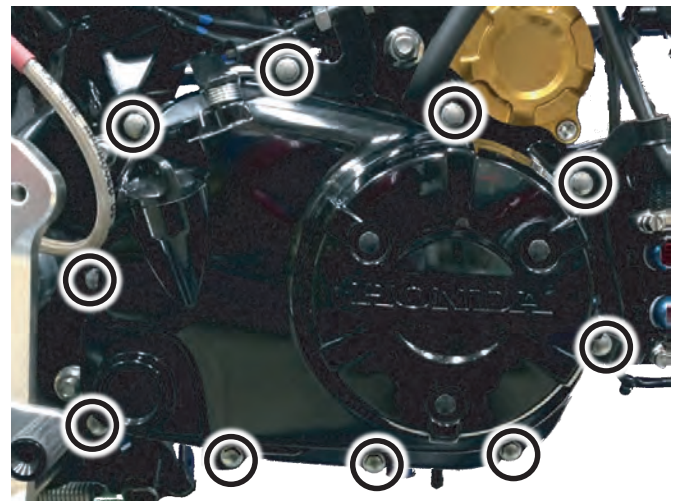


Follow HONDA SERVICE MANUAL instruction.
Remove drain bolt on the bottom of engine to remove oil.

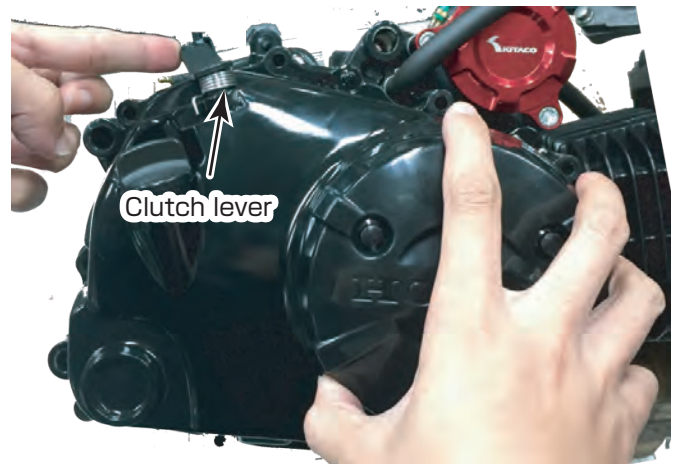
Loosen adjust lock nut of clutch lifter lever to remove
clutch cable.



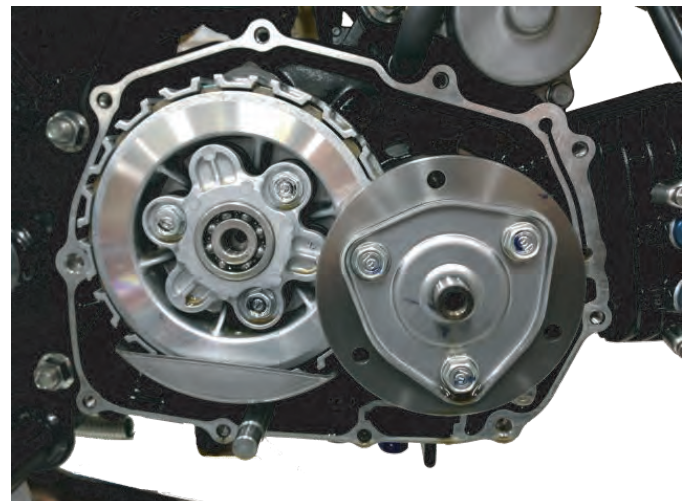
Tighten flange bolt M6x40 diagonally in several times.



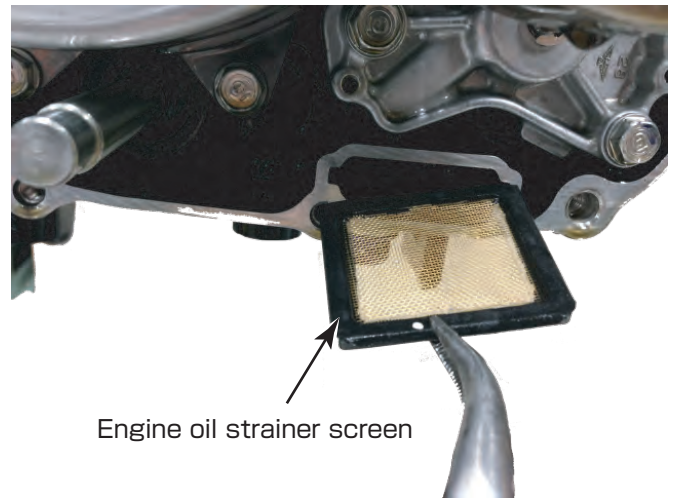
Pulling R CRANKCASE COVER,
push clutch lever to remove clutch cover.



Remove gasket remaining with scrapers, if any.



Clean strainer screen.
Direct tapered (thin) side to the case,
insert the strainer with edge upward.
Exchange if it is hardened for ages.



Tighten flange bolt M6x35 diagonally with several times.

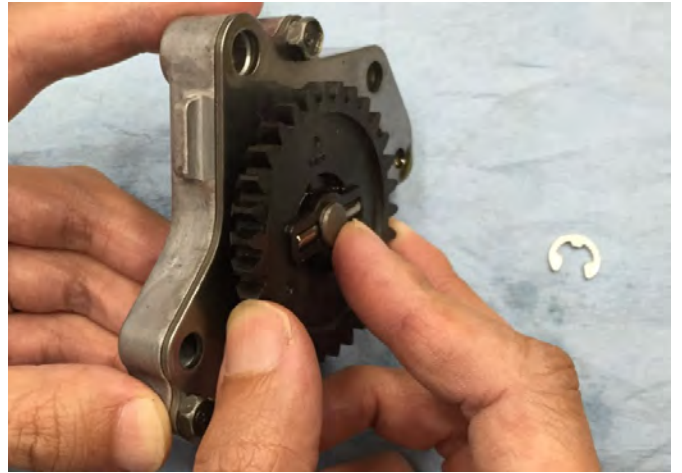
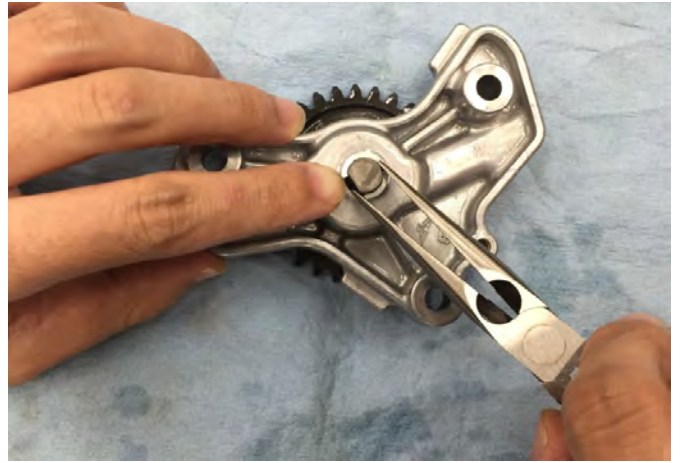


Exchange dowel pin with new one if damaged.

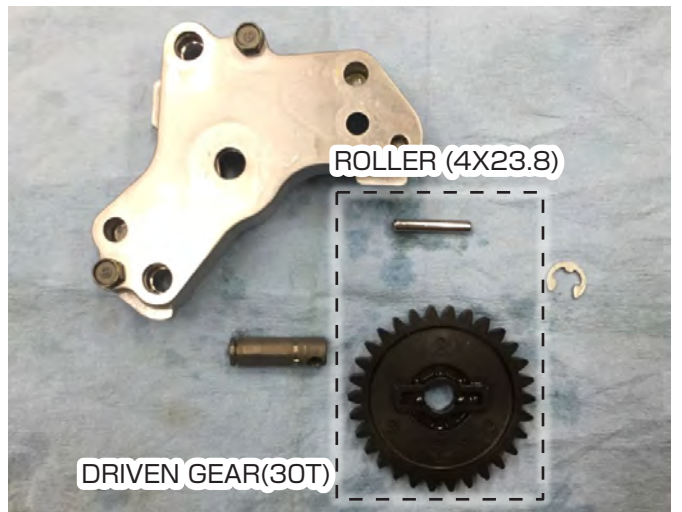
DOWEL PIN 8x12
Part No.989-0800120 (1pcs)



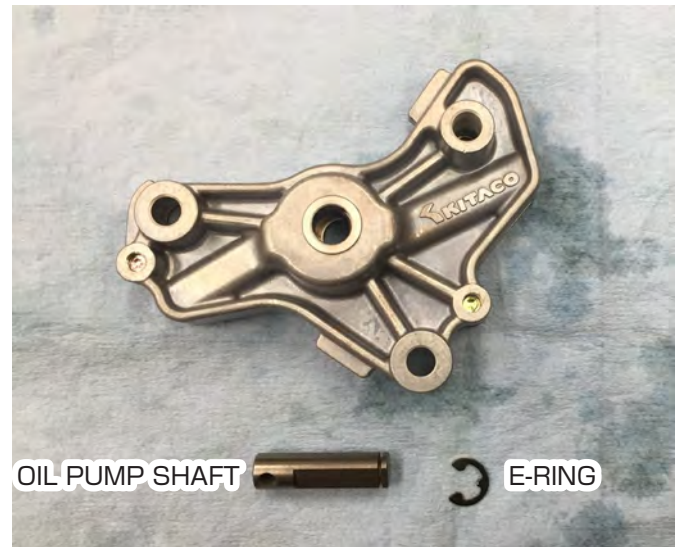
Remove E-clip out of STOCK pump to reuse driven gear (30T) & roller.



Make sure if there are no damages on gear & roller.



Install these STOCK parts to Kitaco oil pump.



Make sure to tighten the bolt M5x12 to specified torque.
TORQUE : 5.2 N·m (0.5 kgf·m, 3.8 lbf·ft)



Insert oil pump shaft to see if it rotates smoothly.
If not, the plate might not fit correctly.



Insert roller through oil pump shaft.



Insert oil pump shaft through driven gear to fit roller in gear groove.

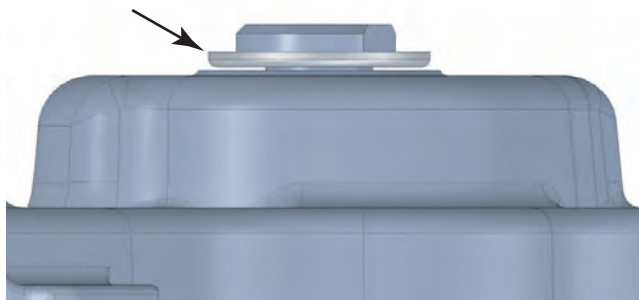


Insert oil pump shaft through pump body carefully.

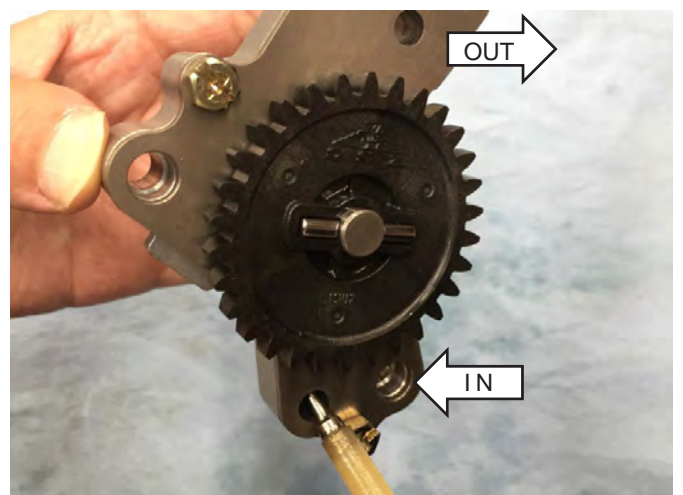
TORQUE : 5.2 N·m (0.5 kgf·m, 3.8 lbf·ft)



Install E-clip in the oil pump shaft groove carefully.
Put R side of E-clip downward.



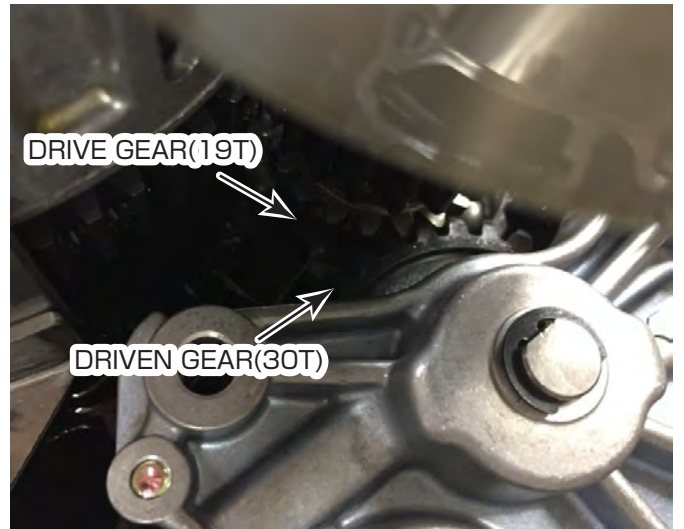
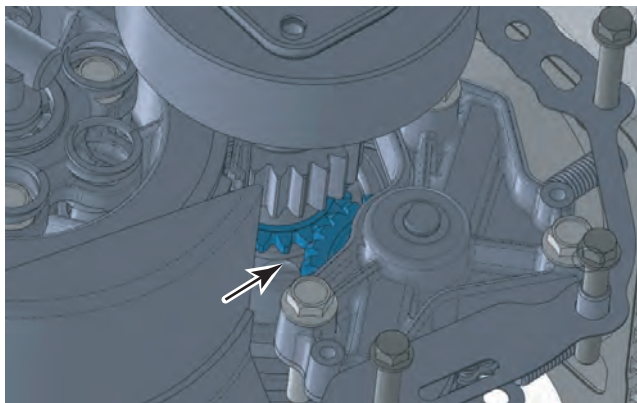
Inject engine oil inside the oil pump.
Turn the gear to see if oil comes out correctly.



Making sure to install dowel pins,
install oil pump to crankcase.



Make sure if oil pump driven gear (30T) & crankshaft side
drive gear (19T) are engaged correctly.



Tighten flange bolt M6x35 diagonally with several times.

TORQUE : 10 N·m (1.0 kgf·m, 7 lbf·ft)



Exchange R crankcase cover gasket with new one
and install it.

Part No. 305-1432004

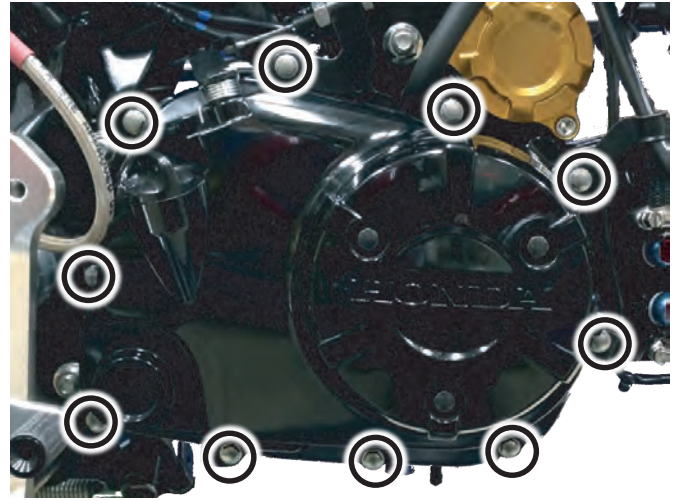
R CRANKCASE COVER GASKET



Tighten flange bolt M6x40 diagonally several times.

TORQUE : 10 N·m (1.0 kgf·m, 7 lbf·ft)

Install clutch cable as it was.



Inject specified amount of oil.
If oil cooler is installed, add specified amount for it.

Engine oil capacity

At draining	0.9 ℓ
At disassembly	1.1 ℓ

● Kitaco assumes no responsibility for accuracy, completeness or sufficiency of the information contained in this document.

